

# A SERIES

75-115 HP



**VALTRA**

**YOUR WORKING MACHINE**

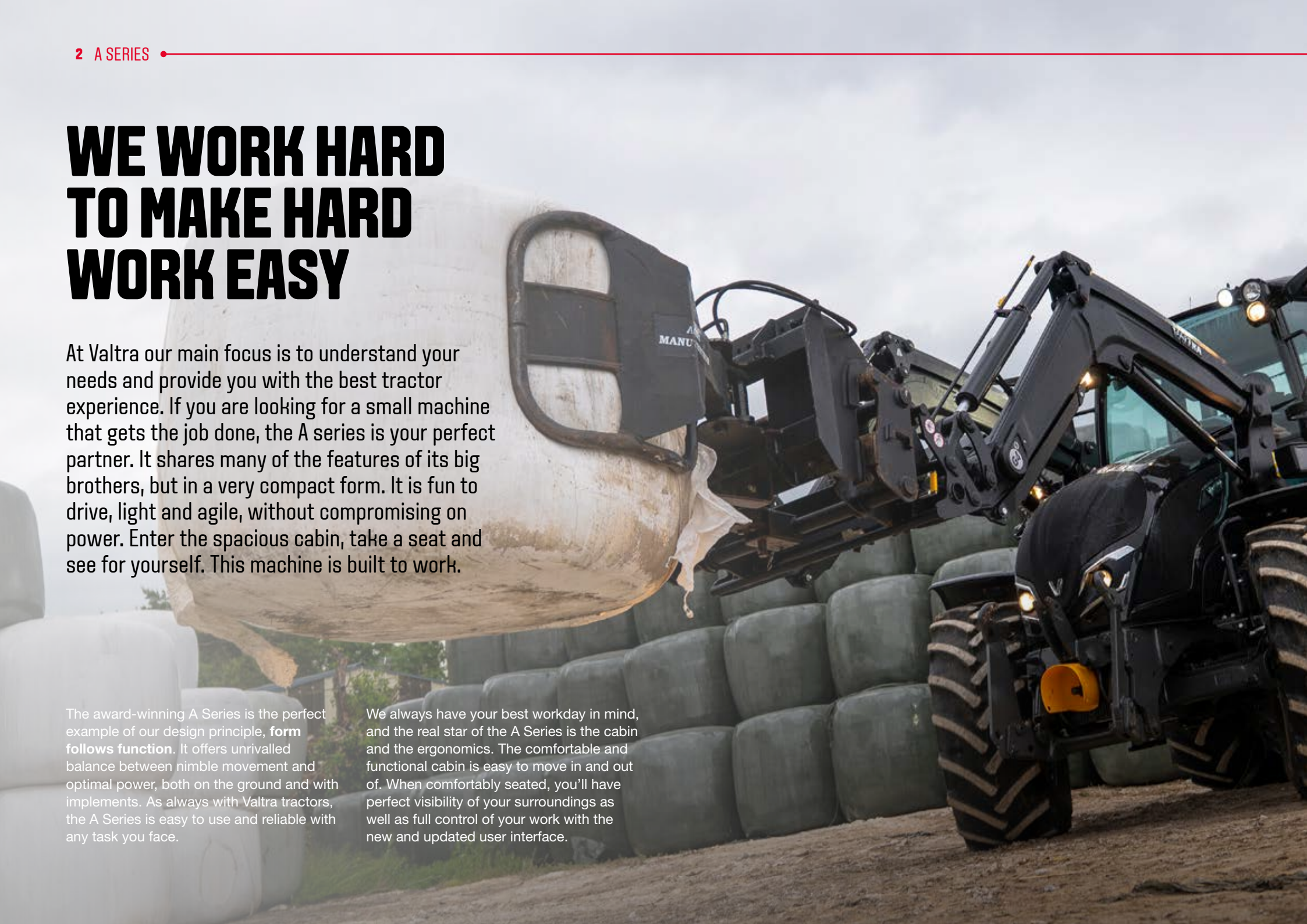


# WE WORK HARD TO MAKE HARD WORK EASY

At Valtra our main focus is to understand your needs and provide you with the best tractor experience. If you are looking for a small machine that gets the job done, the A series is your perfect partner. It shares many of the features of its big brothers, but in a very compact form. It is fun to drive, light and agile, without compromising on power. Enter the spacious cabin, take a seat and see for yourself. This machine is built to work.

The award-winning A Series is the perfect example of our design principle, **form follows function**. It offers unrivalled balance between nimble movement and optimal power, both on the ground and with implements. As always with Valtra tractors, the A Series is easy to use and reliable with any task you face.

We always have your best workday in mind, and the real star of the A Series is the cabin and the ergonomics. The comfortable and functional cabin is easy to move in and out of. When comfortably seated, you'll have perfect visibility of your surroundings as well as full control of your work with the new and updated user interface.





## THE UPGRADED 5TH GENERATION A SERIES

The upgraded 5th generation A Series range is now simplified so that the four-cylinder models come with the HiTech 4 transmission, while the models below 100 hp have the three-cylinder engine and offer the traditional gear lever transmission with optional two-step powershift. The Valtra A105 and A115 models' efficiency has been enhanced by improving cab features, functionality, and incorporating new electronics, including Valtra Guide and ISOBUS functionalities.

## THE NEXT-LEVEL UPDATED 5TH GENERATION A105 AND A115

- Safer, cleaner access with improved functional aluminium steps
- Improved 365 days & nights visibility with new, larger mirrors, improved HVAC, and rear window dust strip
- Effective HiTech-4 transmission with automatic or manual powershift
- Effective 98-litre hydraulic pump
- Factory-fitted front lift with or without front loaders, incorporating manual or electronic controls
- Now with range of smart farming technology options based on the industry-leading easy-to-use Valtra Guide
- ISOBUS compatibility
- Unlimited possibilities for tailored style, comfort, and utility through Valtra Unlimited.



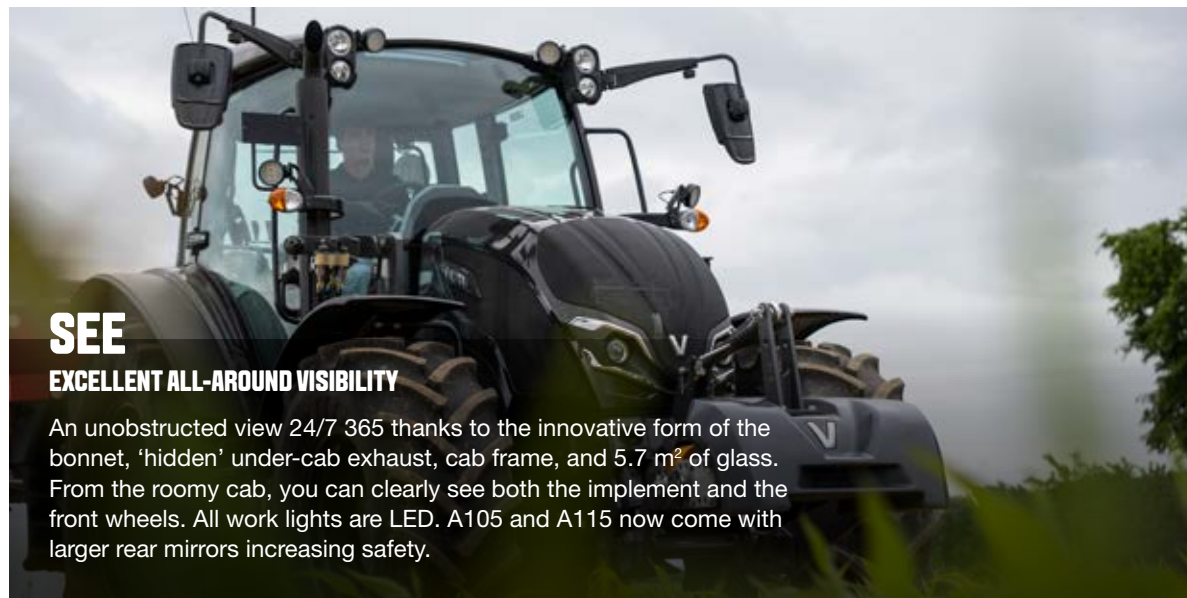
## THE RELIABLE AND DEPENDABLE A75, A85, AND A95 MODELS

- Tried and tested AGCO Power engine
- 6 main speed transmission with AutoTraction and Valtra's sovereign park lock as standard
- Optional two-step powershift transmission
- FactorFactory-fitted loader, incorporating manual or electronic controls



# JUMP IN AND GET GOING

The A Series is your working machine. Sit in the driver's seat and you'll see why. The spacious cabin lets you get straight to work, with nothing in your way and everything in easy reach.



## SEE

### EXCELLENT ALL-AROUND VISIBILITY

An unobstructed view 24/7 365 thanks to the innovative form of the bonnet, 'hidden' under-cab exhaust, cab frame, and 5.7 m<sup>2</sup> of glass. From the roomy cab, you can clearly see both the implement and the front wheels. All work lights are LED. A105 and A115 now come with larger rear mirrors increasing safety.



With the A Series you get a compact tractor that delivers big productivity and all day comfort. The cabin is ergonomic and quiet, and it gives you excellent visibility in all directions. With

Valtra, you will get exactly the right tractor for your needs. All A Series tractors come with Valtra's renowned shuttle transmission including an integrated handbrake.



## ACCESS

### NOTHING IN YOUR WAY

Easier access than any other tractor thanks to the pedal-activated steering wheel tilt, wide door, long handrails, and 3 solid steps.



## WORK

### MADE TO BE PRODUCTIVE

Start smoothly with the Valtra shuttle: select the direction and go! Effortless gear shifting with the fingertip levers - automatic and manual modes are available for Powershift models. AutoTraction is standard. The three-point linkage and PTO controls are conveniently located next to the armrest.

## POWER PLUS EFFICIENCY - A WINNING FORMULA

Feel at home in the cab and take command of both the tractor and the implement. The A Series transfers power efficiently thanks to the robust synchronisation of the mechanical speed ranges (ABC and D) for smooth driving on the road. The smooth powershift changes are fine-tuned and effective. Top speed in transit is achieved at remarkably low engine revs (1950 r/min), ensuring low fuel consumption.

## LIFT AND LOAD WITH EASE

Get the job done. The Valtra A Series A105 and A115 models have a powerful rear lift capacity up to 4.3 tons. The factory-fitted (optional) front lift has a 2.5-ton capacity throughout the entire lifting range on the four-cylinder models.

Modern implements demand high hydraulic output. The A Series delivers. For the A105 and A115 models, a flow of 100 l/min is achieved at nominal engine revolutions. Hydraulic control is simple and easy with traditional levers with flow control. Front lift and quick couplers can be controlled cost-effectively via the rear hydraulics or smoothly via the electric joystick in the armrest, available from Valtra Unlimited.

## HITCH WITHOUT A CLITCH

Choose between an array of trailer hitching options suitable for any market and trailer usage - even the hydraulic push-back pick-up hitch! And with Valtra Unlimited, the use and management of even demanding work equipment can be customised to your individual needs.





# THE FRONT LOADER SPECIALIST

The A Series is designed to give you full control of your tractor and your front loader, so you can work safely and efficiently in all conditions. With its compact size, you get a tight turning radius. And with the large cabin windows and unobstructed view, you get excellent visibility of your load and your surroundings, even with the loader raised. The front loader itself has curved lift rods that follow the tractor bonnet line for even better visibility.







### A SMALL GIANT WITH HUGE CAPACITY

The A Series is capable of lifting more, thanks to the large lift cylinder dimensions and up to 100 l/min hydraulic flow, making your work faster. However, even the most efficient front loader does not compromise the A Series' impressive turning radius.



### PRECISE CONTROL

Speed and power do not always equal efficiency. You also need to be able to control the power smoothly. Valtra is a pioneer in the industry, introducing electronic control more than twenty years ago. Now, we have fully integrated CANbus-controlled electric valves, which guarantee the operator has the best efficiency, whether fast movements for gravel loading or millimetre-accuracy for pallet handling are needed.



### BETTER VISIBILITY MEANS BETTER ERGONOMICS

Handle more than a telehandler alone. Our Nordic heritage is rooted in ergonomics. You need to be able to see your work and workplace even on less sunny days. The A Series has one of the largest roof windows in the industry. With the ample windscreen, large wipers, and extraordinary heating system, you'll be able to see clearly whatever the weather. Great visibility and precise electronic control make for easy loader implement attachment every time.



# DESIGNED AROUND THE DRIVER

Valtra tractors are designed from the start to help you get more done. Every feature we add and every detail we update is done with ease of use, comfort and convenience in mind.

You might not even notice some details and that's the way we intended it. For example, with noise, it's what's not there that counts. The A Series cabin is designed to have a low noise level of just 75dB. The cab structure is another great example – it's narrow at the front to help you navigate in tight areas like livestock buildings or dense forests and yet it's wide at your shoulder line for maximum working comfort.

## A PERFECT VIEW

The A Series is praised by respected trade publications for excellent visibility, all year round. The compact engine and sloping bonnet provide you with the best front-down visibility on the market. The spacious six-post cabin and large rear window offer unparalleled 360-degree visibility. These features make the A Series perfect for specialist tasks such as forestry work. And when night comes, the exceptional work lights will keep you working safely and efficiently.

## 2-LINE TRAILER BRAKES

The 5th generation A Series now includes the option of 2-line hydraulic or 2-line pneumatic trailer brakes to comply with EU regulations.

## AUTOTRACTION ON ALL MODELS

Drive your A Series without touching the clutch with Valtra's famous Autotraction. With AutoTraction, you can stop your tractor simply by depressing the brakes, and when you release the brakes, the tractor starts moving again. Autotraction is always ready to use. You can easily turn it on and off using the sturdy rocker switch on the B pillar. When you need to, you can easily engage the clutch by pressing both brake pedals at speeds below 20 km/h. In addition, all A Series tractors come with Valtra's renowned shuttle transmission, including the integrated handbrake.

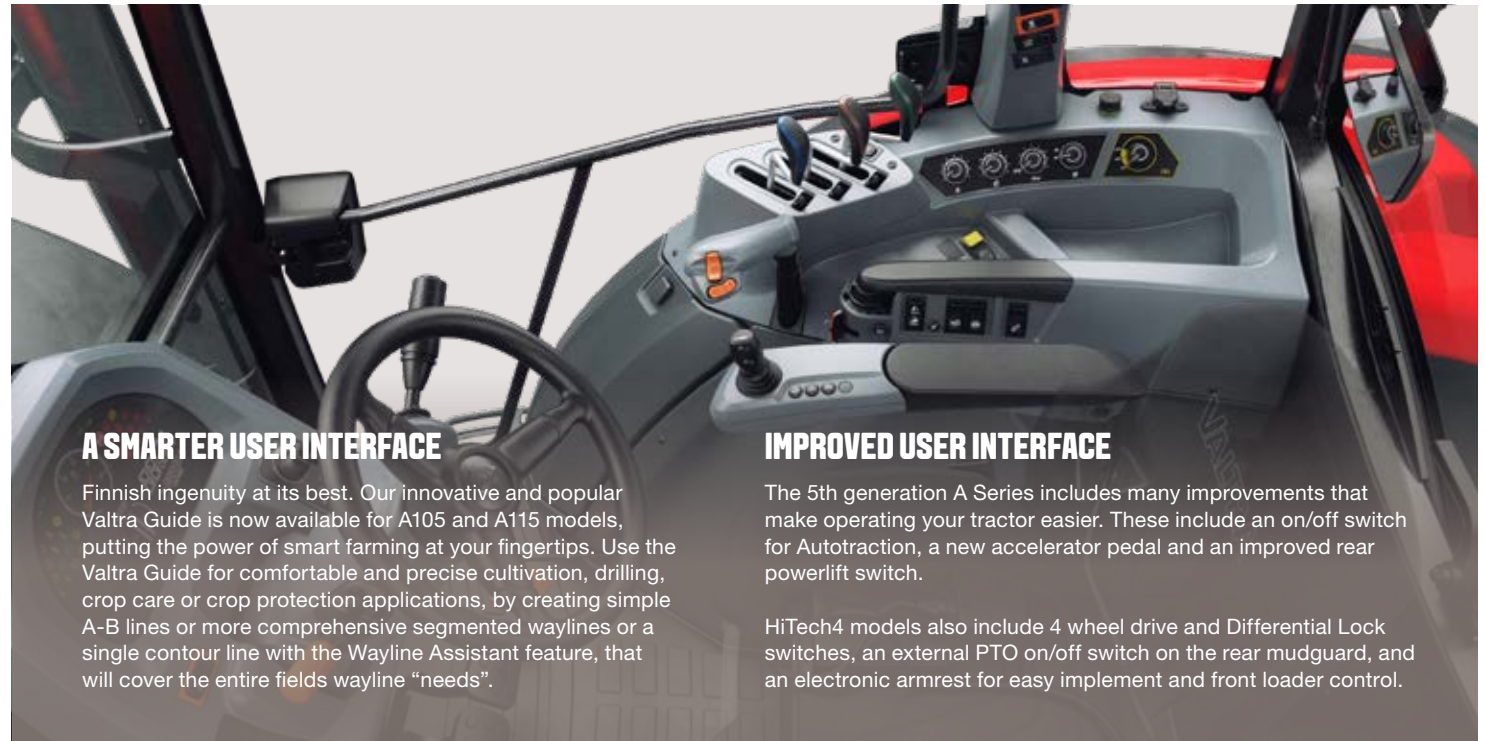






## EASY HYDRAULIC CONTROL

The optimal lifting capacity is delivered via the electrically controlled AutoControl power lift, which comes as standard on all A Series models. Thanks to the high pump capacity, you get fast operation for both your front loader and your implements. Your tractor can be equipped with up to three remote valves, and hydraulic flow control is also available as standard. Easily attach and detach implements using the quick coupling valves



## A SMARTER USER INTERFACE

Finnish ingenuity at its best. Our innovative and popular Valtra Guide is now available for A105 and A115 models, putting the power of smart farming at your fingertips. Use the Valtra Guide for comfortable and precise cultivation, drilling, crop care or crop protection applications, by creating simple A-B lines or more comprehensive segmented waylines or a single contour line with the Wayline Assistant feature, that will cover the entire fields wayline "needs".

## IMPROVED USER INTERFACE

The 5th generation A Series includes many improvements that make operating your tractor easier. These include an on/off switch for Autotraction, a new accelerator pedal and an improved rear powerlift switch.

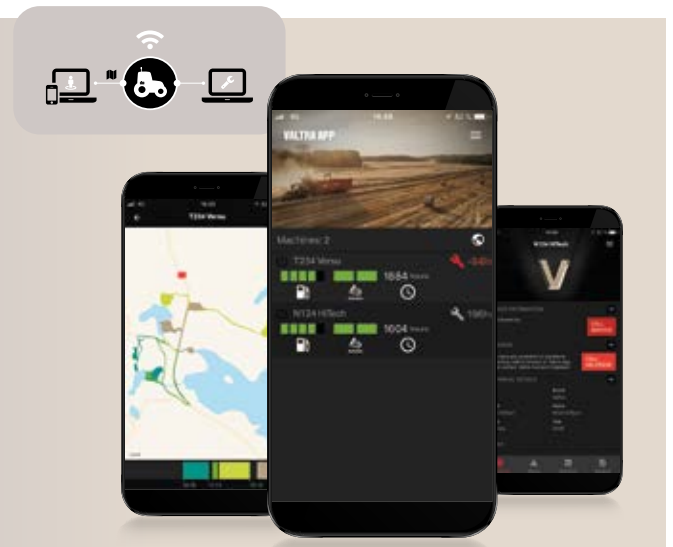
HiTech4 models also include 4 wheel drive and Differential Lock switches, an external PTO on/off switch on the rear mudguard, and an electronic armrest for easy implement and front loader control.

## VALTRA CONNECT

If you're serious about saving time and money to improve your bottom line, and having the insights you need to report on your sustainability, then the A Series' telemetry will suit your business perfectly. Valtra Connect records your tractor activity and GPS movements in real time, giving you the insights you need to make efficiencies. Data shared with your trusted service partner helps to identify issues as they happen to prevent unscheduled down time. Stay safe and protect your investment with Connect's geofence feature which alerts you when your tractor enters or leaves a specified area.

### YOUR BENEFITS EXAMPLE 1

A farmer receives a call from their Valtra dealer informing them they received a service code for one of their tractors, notifying them of a clogged air filter. The dealer has the required filter in stock and agrees on a suitable time for the farmer to have it replaced.





# EASY-TO-USE VALTRA TRANSMISSIONS

The 5th generation A Series includes five hardworking models.

Models below 100 hp are available in GL versions with a best-in-class, easy-to-use mechanical transmission. Ease of use is guaranteed, thanks to the 12 forward and 12 reverse gears, which are grouped into two to minimize lever changes. The A105 and A115 models have the efficient and effective HiTech-4 transmission. All models come with Valtra's sovereign park lock as standard

The HiTech transmission in models A75 to A95 has 6 synchronised gears in 2 ranges. It can be upgraded with a 2-speed powershift (HiTech 2), making a total of 24 forward and 24 reverse gears. For added precision, the HiTech2 has a wide working range with 12 gears covering speeds between 7 and 17 km/h. The HiTech4 electrically controlled transmission is available for A105 and A115, and it features

four ranges and four powershift gears, which can also be controlled automatically. It's also quick and easy to change group gears just by using a rocker switch. Full road speed can be reached with reduced engine speed, saving fuel. All models come with the Valtra Powershuttle, four-wheel drive and AutoTraction as standard. A super creeper is available as an option for all models.

## GL MODEL



## HITECH

- Revolutionary Powershift : 6PS
- Open-centre hydraulics with 3 mechanical spools
- Middle spec armrest
- 2 models A105, A115



## BUILD YOUR OWN VALTRA A SERIES

	MODEL	A75 - 95	A105 AND A115
Engine power		75, 85, 95 hp	105, 115 hp
Engine		3-cylinder compact series engines from AGCO Power	4-cylinder compact series engines from AGCO Power
Wheel base		2250 mm	2430 mm
Transmission	<b>GL MODELS</b> Mechanically controlled transmission	Valtra power shuttle transmission 12+12R or with HiTech2 24+24R	
	<b>HITECH 4 MODELS</b> Electronically controlled transmission, with optional creeper		Valtra HiTech 4 with four step power shift; 16+16R transmission Electric control, no gear levers



# COMPACT STAGE V ENGINES

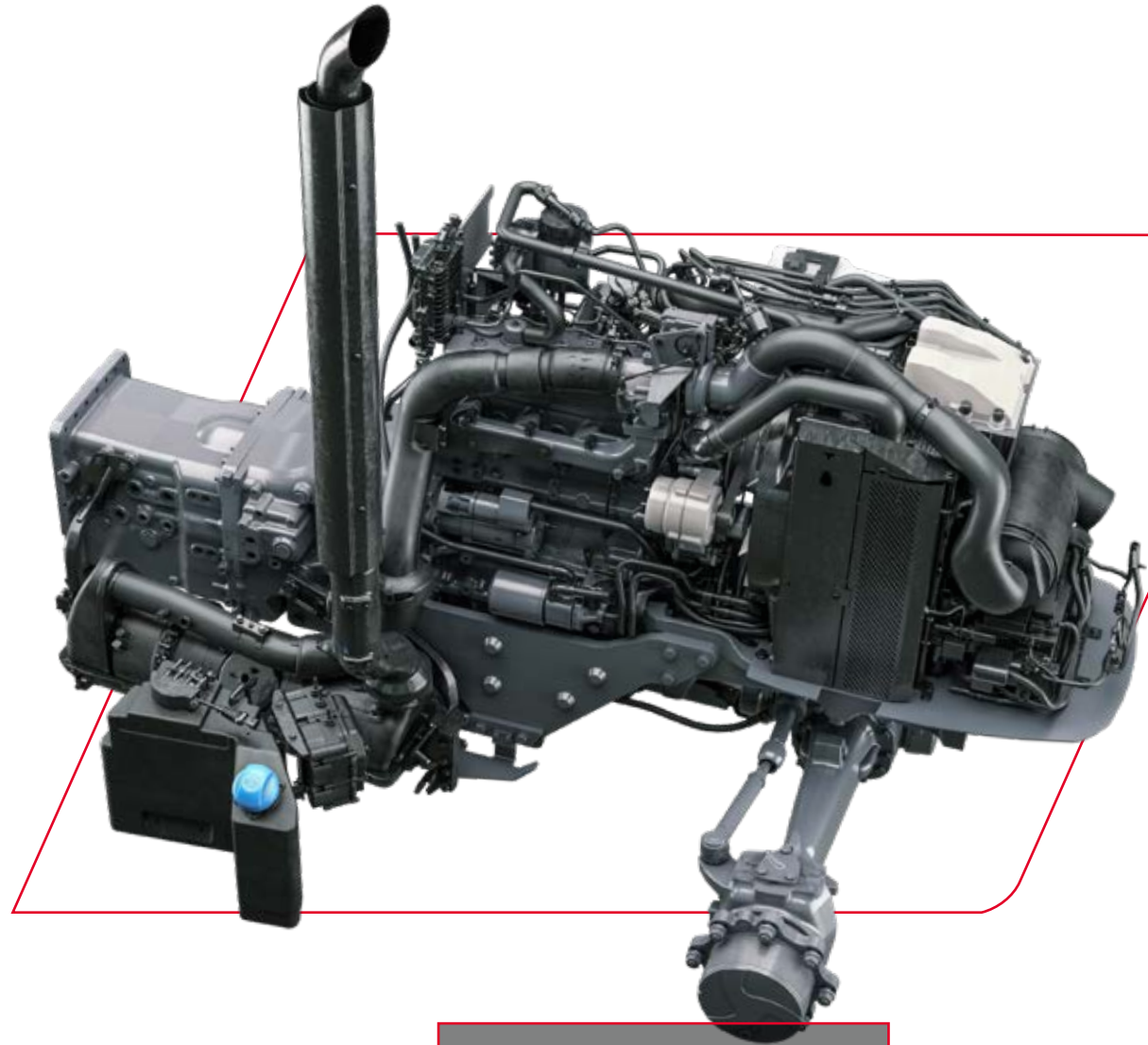
With the 5th generation A Series, power is delivered from advanced compact AGCO Power engines.



The three smallest models have three-cylinder 3.3-litre engines, while the two biggest models have four-cylinder, 4.4-litre engines. These user-friendly engines are packed with state-of-the-art technology, like common rail 1600 bar fuel injection

and four-valve cylinder heads, and have a service interval of 600 hours. The compact engine means the bonnet can be smaller to give you a clear driving direction view. The Stage V exhaust after-treatment unit is located under the cabin for

optimal visibility. The complete package includes DOC, DPF and SCR using AdBlue and because there is no Exhaust gas recirculation (EGR), the engine always uses fresh, clean air.



## ALL-IN-ONE AFTER TREATMENT SYSTEM WITH

Diesel Oxidation Catalyst (DOC), Diesel Particulate Filter (DPF) and Selective Catalytic Reduction (SCR).



# TECHNOLOGY AT YOUR FINGERTIPS

The 5th generation A105 and A115 A Series models can be equipped with the smart farming technology you need to make your work more efficient, more productive, and more sustainable.

## SMARTTOUCH EXTEND

The A105 and A115 are now available with Valtra Guide. Valtra SmartTouch Extend features an easy-to-use 9-inch touchscreen designed to be ergonomic and intuitive. Simply put, it is the easiest technology user interface on the tractor market.

## SMART AND SIMPLE

Finnish ingenuity at its best. Our innovative SmartTouch Extend terminal puts the power of smart farming at your fingertips. Tasks are managed with simple and familiar swipe and tap movements, just like a smartphone... only easier!

## A JOYSTICK THAT'S A JOY TO USE

Valtra's hydraulic joystick is an ideal control for your front loader. Through Valtra Unlimited, it can also be adapted for controlling the front linkage or additional hydraulics.



## VALTRA GUIDE

Valtra Guide is our auto-guidance solution and is the easiest to use on the market. It has been developed based on real user feedback. The automatic steering uses Global Navigation Satellite System (GNSS) to follow waylines precisely and reduces overlaps, saving you time, fuel and money.

Minimising the need to steer means new and seasoned drivers alike can concentrate on the implement and the job at hand, increasing precision and safety while reducing fatigue, overlap, and time spent in the field.

## YOUR BENEFITS EXAMPLE 1

Did you know that Valtra Guide has received recognition in several independent tractor tests for being the most simple and intuitive autoguidance and user interface on the tractor market? No matter your experience level, you get 100% of the benefits, right from the start.

## VALTRA GUIDE + WAYLINE ASSISTANT

With Valtra Guide, recording and configuring waylines and field boundaries is easy. By precisely configuring waylines and accurately sticking to them, total soil compaction is reduced, improving soil health and yields. Wayline Assistant adds the wayline types Segmented Wayline and Single Contour to the existing wayline types. Operators benefit from flexible wayline recording options, including segment recording and field boundary generation. Single Contour is ideal for crops like asparagus or strawberries planted without a guidance system. It consolidates all tracks into a single wayline for efficient crop care and uses automatic turning manoeuvres for optimised operation.

## YOUR BENEFITS EXAMPLE 2

To start using the Valtra Guide, you only need a straight A-B line or a Contour line. Both are easy to create in a few clicks. After that, you can enjoy relaxed and precise work in your Valtra tractor.

## YOUR BENEFITS EXAMPLE 3

Did you know that with the Wayline Assistant, the tractor can recognise which of the field's headland waylines it is actually operating on? Working the headlands with guidance is easier than ever before. Just steer the tractor towards the next headland and once the right segmented wayline is chosen by the Wayline Assistant, simply engage Valtra Guide, and off you go with the automatic steering engaged.



# EASY SMART FARMING

Valtra's smart farming technology is the easiest to use on the market, and work seamlessly together. Work with your ISOBUS-compatible implements and get the precision, control, and data you need to enhance your operations on and off the field.







### VALTRA + ISOBUS

Valtra SmartTouch Extend gives you the high level of control that precision farming demands. With Valtra SmartTouch Extend and ISOBUS, you can work with any ISOBUS-compatible implement, from any manufacturer, thanks to the ISOBUS standard ISO 11783. SmartTouch Extend lets you connect implements to the terminal quickly with “Plug and Play” simplicity so that all the relevant machine data is uploaded to the terminal immediately. No additional screens or terminals are needed so your operating environment stays nice and tidy.



### VALTRA SMART FARMING TECHNOLOGY ADDS UP

Valtra's smart farming technologies work seamlessly together – Valtra Guide with its' additional modules like Wayline Assistant, are there to make the tractor operation as easy and precise as possible. When these are combined with the ISOBUS features; Section Control, Variable Rate Control, and TaskDoc Pro, which in turn further enhance the accuracy, profitability, sustainability and data management, you will have the possibility to tailor your A Series tractor to fit your current and future SmartFarming needs in the best possible way. All smart farming features are controlled smartly and simply from the SmartTouch Extend user interface. Task profiles files can be stored in the terminal so that it only takes a few swipes and taps to start tasks. Your dealer has expert smart farming knowledge and is there to make sure your smart farming features are set up and running.

### DATA EXCHANGE

TaskDoc. and TaskDoc Pro make managing tasks easy. Save time setting up tasks and get straight to work. When done, have all the data you need for easy reporting.



# ALWAYS CONNECTED. ALWAYS IN CONTROL.

You work hard. You operate in challenging and diverse environments, running five jobs at once, putting in long hours and hauling distances. It's our job to make your tractor experience the best it can be. Our easy Connect, Care & Go service concept offers unrivalled practicality that eases daily operation and maintenance without adding to your costs. The best tractor experience is not just the machine, or the moment you purchase it – we, our partners and our vast dealer network are here to help you through the whole lifecycle of your tractor.

## EASY DAILY SERVICE

You only need five quick checks to ensure an uninterrupted workday. All maintenance is easy to do.

- ✓ Visual check for tyre and oil leaks. Clean the grilles and radiator.
- ✓ Check the coolant level.
- ✓ Check the fuel and Add-Blue levels.
- ✓ Check the engine oil level.
- ✓ Check the transmission oil level.



# PEACE OF MIND. IN YOUR HANDS.

We believe in a seamless connection between our customers, dealers, machines and the Valtra factory. When connected you can select the desired service and warranty packages to meet your expectations and requirements. We take care of you, so you can take care of your business.

## Valtra Connect

[www.valtraconnect.com](http://www.valtraconnect.com)



## CONNECT

TRACTOR DATA,  
INFORMATION  
AND SERVICES.

## STAY CONNECTED ANYWHERE, ANYTIME

By choosing Valtra, you are connecting with a team of professionals who help you make the most of your business. The Valtra Connect telemetry solution records tractor activity and GPS movements, all the time. It can display history and real-time data on your mobile device, and you can access the data anywhere, anytime. Using this data, you and your Valtra service partner can anticipate maintenance needs and react faster to solve minor issues and avoid extra visits to your authorised service centre.



## CARE

FACTORY EXTENDED  
WARRANTY.

## TOTAL PEACE OF MIND

With Valtra Care extended warranty contracts, you can find ultimate peace of mind and security against additional repair costs of non-wearing parts. Care allows you to set your overheads when you purchase your Valtra tractor, or when the standard warranty expires. They are flexible, offering three excess levels – 0€, 290€ or 590€ and are available up to 5 years or 6,000 hours.



## GO

MAINTENANCE  
CONTRACT.

## MAXIMISE YOUR UPTIME

Fix your costs at the point of purchasing your Valtra machine and ensure optimum performance while guaranteeing efficiency and maximising the residual value of your machine! Valtra Go service contracts ensure regular and thorough maintenance, which will prolong the reliable operation of your Valtra tractor. Maintenance costs are small compared to repair costs resulting from a lack of maintenance. The Valtra Go service package includes all prescribed maintenance work bookable up to 10,000 hours for new and used machines.



# FINANCIAL STABILITY WITH COST CONTROL

No two farms are exactly the same. They each have unique features and individual challenges. That is why we offer a flexible solution to help you stay on top of your costs.

A farm's cash flow can often be unpredictable and affected by many external factors. Seasons are different and prices vary, so staying on top of finances can be tricky. To be successful and have peace of mind, you need financial stability and full control of your costs.

Machinery and equipment are both a vital part and a major expense for any farm operation. You need different solutions for different situations, such as flexible models of ownership.

Financing a Valtra machine is now easier and more flexible than ever before. With the **Rent, Buy, Lease** programme offered by **AGCO Finance**, we are able to build a financing solution to meet your needs. Together with **Connect, Care & Go**, it is the best way to keep your business cost-effective and stable.

**LET'S TALK MORE!**





**BUY**

TRACTOR OWNERSHIP WITH  
OPTIONAL CONNECT, CARE AND GO



**RENT**

SHORT TERM RENTAL WITH  
INCLUSIVE SERVICES



**LEASE**

OPERATIONAL LEASE WITH OR  
WITHOUT SERVICE CONTRACT





#### YOUR OWN VALTRA DEALER

Your Valtra dealer represents the best tractor and implement expertise in your area. They understand the technical aspects of your tractor and the challenges you face. You can always turn to your dealer and receive the best service from consultancy, maintenance, repair and spare parts to the purchase of a new piece of equipment. Valtra dealers are independent entrepreneurs. AGCO audits its dealer representatives each year to ensure that you get the best possible service.

#### GENUINE PARTS AND HIGH QUALITY ACCESSORIES - ALWAYS AVAILABLE

Valtra's comprehensive spare parts service supplies the parts you need – as fast as by the next morning. This helps you keep your tractor productive during the busy ploughing and harvesting seasons. The AGCO Parts label ensures that you are getting original Valtra spare parts that have been thoroughly inspected and tested.



#### AGCO MAKES THEM UNBEATABLE, WE MAKE THEM AFFORDABLE.

At AGCO Finance, we tailor your personal finance solution based on your cash flow and operation. Tell us how much you can afford on a monthly basis, and we will create a flexible payment schedule according to your business needs, taking seasonal variations into account.

As a full-service provider, we also offer financing services such as leasing, rental

options, and insurance. Our services may vary between countries, so please check our website or your nearest dealer for available offerings.

#### VALTRA TEAM

Valtra Team is our customer magazine, published twice a year. Each issue contains useful information about the latest innovations and the most efficient working methods. You can also access the magazine's archives online and read articles dating back to 2000.

#### AGCO ACADEMY

Tractors and related technologies, especially precision farming technologies, are developing at a rapid pace. The Valtra Academy continuously trains Valtra dealers and service technicians, so that the first-class and up-to-date expertise that you get from your Valtra dealer today will continue to meet your needs in the future.

#### VALTRA COLLECTION

The Valtra Collection offers high-quality clothing and accessories for work and leisure. The materials and details are carefully selected. The clothing reflects Valtra's modern design language, with light, yet extremely durable materials that combine style and functionality.





# OPTION PACKAGES

Building your working machine with Valtra is an experience in itself. We offer hundreds of different accessories and options to choose from, adding up to an infinite number of different combinations. Because picking and choosing can be difficult, we offer cost-effective option packages to help you with decision-making.

The option packages make it easier to specify a new tractor: nothing important is left out, and the resale price of the tractor is also taken into account. When purchased as a package, the equipment is less expensive than when ordered separately. Best of all, the option packages do not limit you from selecting additional features from Valtra Unlimited.

## 1. COMFORT

The Comfort package takes your comfort zone to another level. This package is available for all A Series models. Options included in the Comfort package:

- 3 speed PTO 540/540E/1000 (HiTech4 only)
- 3 rear valves
- Suspended cab (HiTech4 only)
- Seat, Air Suspended
- Passenger seat
- Road lights with LED rear lights and upper lights
- 4 front + 4 rear work lights



## 3. CUSTOMIZE TO YOUR NEEDS



## 2. SELECT YOUR FRONT LOADER



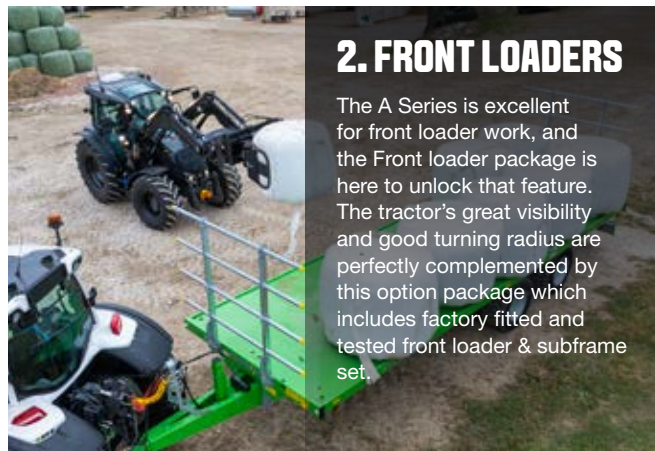
## 1. ADD AN OPTION PACKAGE



Our full range of option packages can be found on our website. Scan the QR code for more information. Alternatively, contact your local Valtra dealer to find the best options and option packages to support your work.

## 2. FRONT LOADERS

The A Series is excellent for front loader work, and the Front loader package is here to unlock that feature. The tractor's great visibility and good turning radius are perfectly complemented by this option package which includes factory fitted and tested front loader & subframe set.



## 3. VALTRA UNLIMITED

You can add Valtra Unlimited options to HiTech 4 models to tailor your tractor to your exact needs.





# YOUR TRACTOR. YOUR WAY.

It's your A Series. Yours. Whatever your needs, wants, or desires. With accessories and options to tailor your tractor to suit your work, branding, or dreams, there's always a reason to go Unlimited. What do you need? What have you been dreaming of? Done and done. We make it happen. Available for A105 and A115

## PERFORMANCE FOR ANY PURPOSE

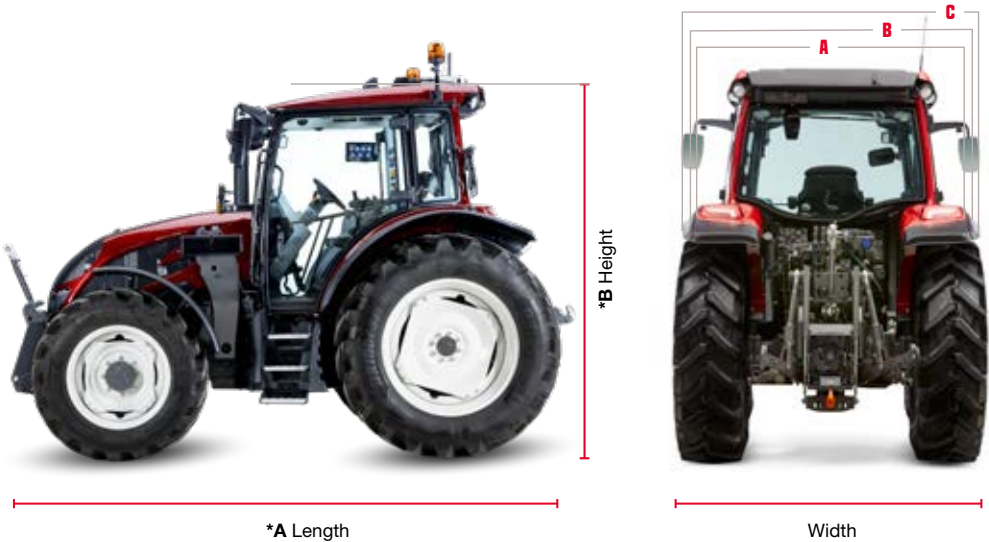
Valtra Unlimited can fit any accessory or specialist equipment not available directly from our production line. With Valtra Unlimited, your A Series tractor is a true multi-purpose vehicle, built according to your unique specifications, with the design, comfort, and features you need to succeed in any environment.

## FACTORY FITTED

The Unlimited Studio is located at the Valtra factory in Suolahti, Finland. Fitting of all accessories and equipment by Valtra Unlimited is covered by our factory warranty. We also supply all the servicing and spare parts for options fitted by Valtra Unlimited. The accessories and equipment available from Valtra Unlimited include additional working and warning lights, premium leather steering wheel and seats, a broad range of paint colours, central lubrication, stereo systems and much, much more.







Own working weight kg:	Max total weight kg:	Widths:	Mudguard widths:
A75 - A95: 3700	A75 - A95: 6200	A75 - A95: 2068-2207	Without extensions: 1858
A105-A115: 4300	A105-A115: 8500	A105-A115: 2068-2250	Narrow: 2028
			Wide: 2320







MODEL	A75-A95	A105-A115
<b>DIMENSIONS</b>		
Wheel base [mm]	2250	2430
*A Length [mm] (without front weight)	4078	4367
*A Length [mm] (with front weight)	4424	4713
*B Height [mm] (min tyre SRI)	2664	2749
*B Height [mm] (max tyre SRI)	2714	2799
Height rear axle centre to top of standard roof [mm]	1964	1999
Turning radius (track 1704mm) [m]	3,72	4,04
Ground clearance FRONT [mm] (max/min)	425/475	446/496
Ground clearance MID [mm] (max/min)	390/440	428/478
Ground clearance REAR [mm] (max/min)	440/490	456/506
Weight (empty tanks) [kg]	3700	4305
Weight distribution F/R [%]	40/60	
Max front axle weight [kg]	3000	3500
Max rear axle weight [kg]	5000	6400
Max total weight [kg]	6200	8500
Fuel capacity, basic [l]	147	200
Fuel capacity, steel tank [l]	150	180
AdBlue capacity [l]	13	13
Min tyre size	<b>SRI 700</b> 420/85R30 +320/85R24	<b>SRI 750</b> 420/85R34 + 340/85R24
Max tyre size	<b>SRI 750</b> 420/85R34 + 340/85R24	<b>SRI 800</b> 420/85R38 + 340/85R28

MODEL	A75-A95	A105-A115
ENGINE		
AGCO Power engine type	33 MBTN-D5	44 MBTN-D5
No of cylinders	3	4
Engine volume, (litres)	3,3	4,4
Engine speed at max power [r/min]	2000	2000
Engine nominal speed [r/min]	2200	2200
Engine speed at max torque [r/min]	1500	1500
Idle speed [r/min]	850	
Low idle (shuttle lever on P) [r/min]	700	
Oil-change interval (h)	600	
Emission grade	Stage V	
Exhaust cleaning system	DOC + DPF + SCR	
TRANSMISSION		
Gear Lever models	12+12R	
HT2	24+24R	
HT4		16+16R
Creeper	Option	Option
STD speeds at 2200 r/min [km/h]	2,0 - 40	
Lowest creeper speed at 2200 r/min [km/h]	0,15	
HYDRAULICS		
Lifting power rear [max kN]	3000	4300
Type of hydraulics	Open center	
Pump capacity max [l/min]	65	98
Transmission and hydraulic oils	Common oil	
Number of mechanical service valves rear	2 or 3	
Oil available for implement [litres]	20	32
PTO		
Engagement type	Electrohydraulic	
540 / 1000 @ engine speed [r/min]	1920 / 1960	
540 / 540E / 1000 @ engine speed [r/min]	1920 / 1560 / 1960	





You don't just work hard - You work smart.

You constantly work to improve efficiencies in workflow. Managing your business to be profitable and sustainable. Crops, clients, and livestock all need constant attention, and your time is precious. You understand that you need the right power to get tasks done, but also the right data to be able to do it efficiently.

Whether you manage one tractor or a fleet, you demand uninterrupted connectivity and maximum uptime. You need to know where your machines are, what they are doing, and how they are doing it to plan for your efficient and sustainable business. You deserve a partner who understands this and works with you at every stage.

That is why you trust Valtra. We work hard to make hard work easy. We make machines that are tough on the outside and smart on the inside.

Our machines are built to last. Built to work. Built for you.

## YOUR WORKING MACHINE



**VALTRA** is a worldwide brand of **AGCO**.

**Valtra Inc.**  
Valmetinkatu 2  
FI-44200 Suolahti  
Tel. +358 (0)2045 501

[www.valtra.com](http://www.valtra.com)  
[www.youtube.com/valtravideos](http://www.youtube.com/valtravideos)  
[www.facebook.com/ValtraGlobal](http://www.facebook.com/ValtraGlobal)

The tractors that appear in this brochure may be equipped with special options. Changes possible - all rights reserved.